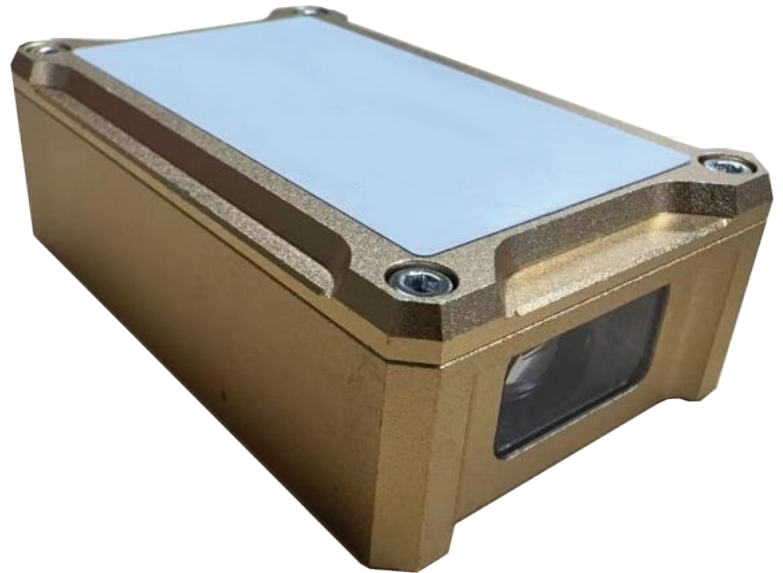


The GS-LR04 Laser Rangefinder is a high-precision monitoring instrument designed for accurate non-contact distance and displacement measurement across a wide range of engineering and structural applications.



FEATURES

Laser Phase Measurement Technology	Provides fast, high-accuracy non-contact distance measurement between the transmitter, receiver, and target.
High Precision Monitoring	Delivers measurement accuracy of ± 1 mm + 20 ppm with 0.1 mm resolution.
Compact Design	Small and lightweight construction allows for easy installation in confined or complex environments.
Wide Operating Temperature Range	Reliable performance in temperatures from -20°C to 70°C.
IP65 Protection Rating	Durable weather-resistant enclosure suitable for demanding outdoor and industrial environments.
Flexible Integration	Supports diverse interface options to suit a wide range of monitoring systems and applications.
Long-Range Capability	Measuring range from 0.2 m to 50 m, with customisable configurations available.

Using advanced laser phase measurement technology, the system delivers fast, reliable readings with exceptional accuracy and stability, making it ideal for long-term monitoring in challenging environments. Compact, robust, and easy to integrate, the GS-LR04 supports a variety of interfaces to suit diverse site and project requirements.

SPECIFICATIONS

Model	GS-LR04
Protection Level	IP65
Measuring Range	0.2 m ~ 50 m (customisable)
Resolution	0.1 mm
Accuracy	±1 mm + 20 ppm
Operating Temperature Range	-20°C ~ 70°C

APPLICATIONS

The GS-LR04 Laser Rangefinder is suitable for a wide range of structural and geotechnical monitoring applications where precise non-contact displacement and distance measurement is required.

Typical applications include tunnel convergence monitoring, foundation pit deformation monitoring, bridge deflection measurement, structural movement analysis, and other infrastructure monitoring projects requiring reliable long-term performance and high-accuracy data collection.

For more information about the GS-LR04 Laser Rangefinder or to discuss your project monitoring requirements, contact the team at CESCO Equipment. Our specialists can assist with product selection, technical advice, and tailored monitoring solutions for your application.