

The GS-DDL-06 Digital Data Logger is a rugged remote monitoring solution designed for reliable long-term data acquisition in demanding environments. Supporting MODBUS-RTU communication with up to 64 connected devices, it features ultra-low power consumption, built-in 4G/GSM connectivity, solar charging capability, and real-time cloud-based monitoring. Its IP-rated construction and remote configuration functions make it ideal for unattended infrastructure, geotechnical, environmental, and industrial monitoring applications.



FEATURES

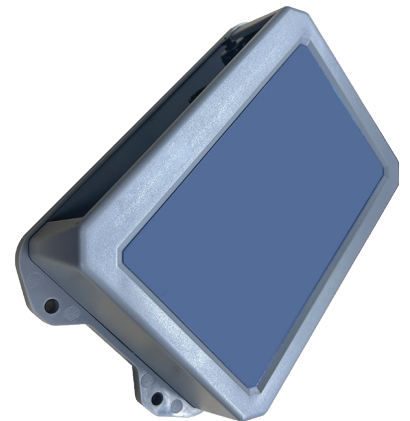
Ultra-Low Power Consumption	20µA power consumption in sleep mode for extended battery life.
Delayed Data Collection	Filters and reports data only after removing anomalies for improved reliability.
Online Monitoring	Supports real-time, historical, and alarm data monitoring on PC and mobile devices.
Remote Configuration	Collection frequency, sending frequency, and alarm limits can be configured remotely.
MODBUS-RTU Compatibility	Compatible with all products supporting the standard MODBUS-RTU protocol.
4G/GSM Communication	Built-in SIM card and wireless communication for remote data transmission.
Solar Charging Support	Integrated solar charging system with built-in 7800mAh lithium battery.
Enhanced EMC Resistance	Hardware and software monitoring designed for harsh industrial environments with electromagnetic interference.
24/7 Continuous Monitoring	Data server supports long-term continuous data recording and storage.
Open API Integration	Open cloud platform API enables seamless integration with user-specific platforms.
Rugged Construction	IP67/IP65 protection rating for reliable outdoor operation.
Wide Operating Temperature	Designed to operate in temperatures from -20°C to 70°C.

SPECIFICATIONS

Model	GS-DDL-06
Input Signal	RS485 (MODBUS-RTU), supports up to 64 devices
Network	4G/GSM
SIM Card	Built-in
Antenna	Built-in (optional)
Operating Temperature	-20°C to 70°C
Storage Temperature	-40°C to 85°C
Protection Level	IP67/IP65
Power Supply Types	Solar Powered / External Power Supply
Solar Power Supply	Built-in 7800mAh lithium battery with integrated solar charging
External Power Supply	10~30VDC
Additional External Input	3.7~5V
Configuration Mode	Local configuration / Remote configuration
Upload Information	Data points, battery status, network status, signal strength, alarm information, etc.

APPLICATIONS

The GS-DDL-06 Digital Data Logger is suitable for remote monitoring applications across geotechnical, structural, environmental, and industrial projects. It is ideal for collecting, transmitting, and managing data from multiple monitoring instruments in real time, particularly in remote or unattended outdoor environments.



For more information about the GS-DDL-06 Digital Data Logger or to discuss your project monitoring requirements, contact the team at CESCO Equipment. Our specialists can assist with product selection, technical advice, and tailored monitoring solutions for your application.