

The GS-CM06 Crack Meter is designed for accurate, real-time monitoring of structural cracks in buildings, bridges, heritage structures and other critical assets.

With low power consumption, remote parameter adjustment and integrated alarm functionality, it provides a practical solution for long-term crack movement monitoring and early warning applications.



FEATURES

Low Power Consumption Design	Increases battery life, allowing the product to operate for more than two years without an external power supply.
Real-Time Monitoring	Integrated collection and transmission system enables real-time monitoring when connected to a monitoring platform.
Built-In Self-Test Alarm System	When alarm thresholds are exceeded, the device performs multiple verification collections to improve monitoring reliability.
Remote Parameter Configuration	Sampling intervals and other operational parameters can be remotely modified through the monitoring system.
IP68 Protection Level	The collection terminal features a high-level IP68 protection rating for demanding environments.
Compact and Easy Installation	Small form factor allows for simple installation across a wide range of monitoring applications.

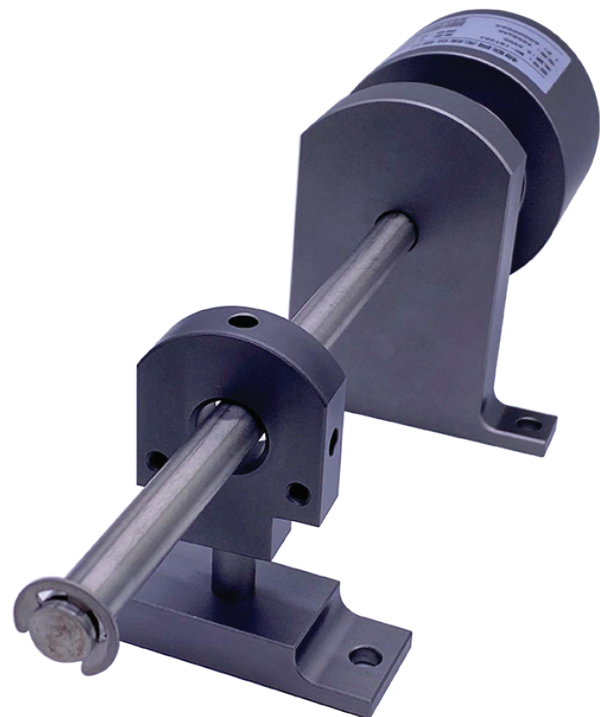
SPECIFICATIONS

Specification	Value
Model	GS-CM06
Accuracy	0.1 mm
Nonlinearity	±0.5%
Sensitivity	0.01 mm
Measuring Range	±5 mm, ±10 mm, ±25 mm, ±50 mm (customisable)
Temperature Range	-20°C to 80°C
Protection Level	IP68

APPLICATIONS

The GS-CM06 Crack Meter is suitable for a wide range of structural monitoring applications, including residential buildings, heritage and ancient structures, bridge piers, retaining walls and other critical infrastructure.

It enables accurate long-term monitoring of crack movement and structural behaviour, helping support preventative maintenance, safety assessment and early warning systems.



For more information about the GS-CM06 Crack Meter or to discuss your project monitoring requirements, contact the team at CESCO Equipment. Our specialists can assist with product selection, technical advice, and tailored monitoring solutions for your application.