

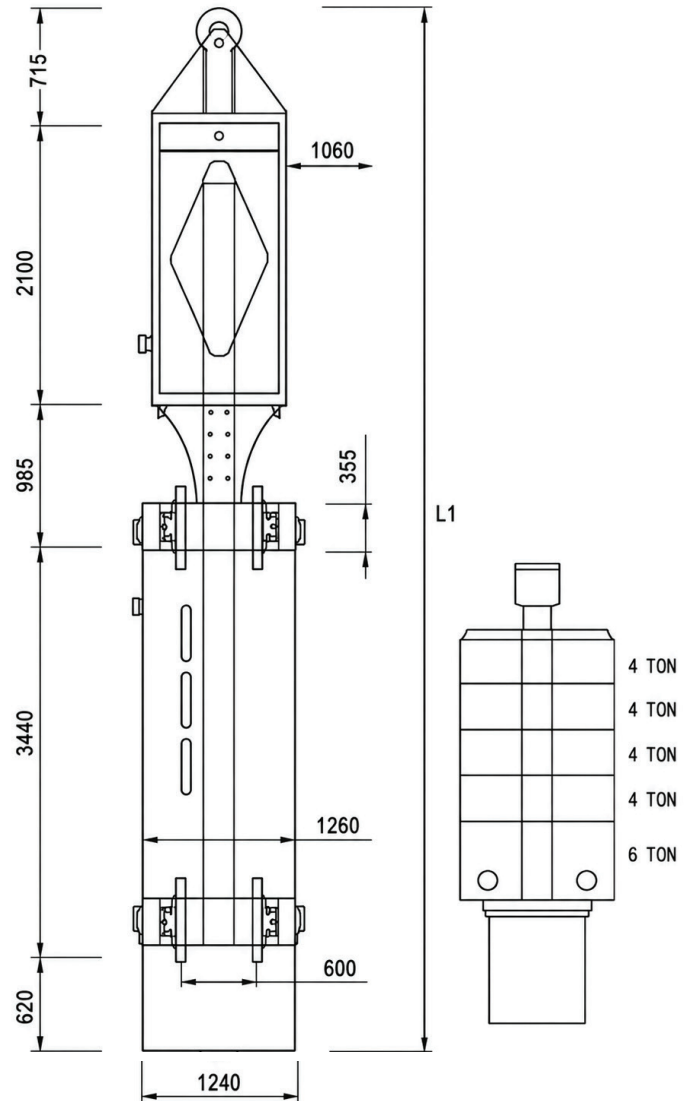
The HH range of piling hammers were designed for driving a variety of piles including steel tubes, combi piles, 'H' sections and reinforced / pre-stressed concrete piles. Operated from piling rig leaders or crane suspended, the HH range has the following important features:

High Impact Efficiency - The proprietary hydraulic circuitry and unique design support a hammer efficiency of above 90% and maintain a consistent impact value



Versatility - Step-less controls on ram height, enable the operator to adjust to different piling requirements for different piles and conditions.

Ease Of Maintenance - Simplicity in design, modular construction and interchangeability in parts facilitate ease in maintenance and minimize down-time.



SPECIFICATIONS

| Performance Data | Ram Mass | Max Impact Energy | Blow Rate Max Stroke | Max Stroke | Min Stroke | Hammer Weight | Max Working Pressure | Hydraulic Flow Required |
|------------------|----------|-------------------|-------------------------|------------|------------|---------------|----------------------|-------------------------|
| Model | KG | kNm | BPM | MM | MM | KG | BAR | LPM |
| HH14 | 14,000 | 210 | 32 | 1,200 | 200 | 22,000 | 260 | 370 |
| HH16 | 16,000 | 240 | 32 | 1,200 | 200 | 24,000 | 270 | 370 |
| HH20 | 20,000 | 300 | 30 | 1,200 | 200 | 28,000 | 290 | 415 |
| HH22 | 22,000 | 330 | 29 | 1,200 | 200 | 30,000 | 300 | 415 |

All technical data are purely indicative and subject to change without notice

SPECIFICATIONS

| Technical Specification | Unit | Value |
|-------------------------|------------|---------------|
| Engine | John Deere | |
| Engine Power Output | HP | 350 |
| Engine Speed | RPM | 1,800 |
| Pump Max Oil Flow | LPM | 415 |
| Max Working Pressure | BAR | 300 |
| Hydraulic Oil Capacity | LITRE | 800 |
| Diesel Fuel Capacity | LITRE | 500 |
| Weight Dry / Wet | KG | 4,500 / 5,500 |

Tier 3 Turbo charged diesel engines used exclusive for reliability, fuel economy.

Hydraulic filter sensor and temperature sensor build into system for service indication.

Open circuit hydraulic system using electronically controlled axial piston pumps.

Lockable doors provide security and easy service access.

Control panel function includes, Engine RPM, Emergency stop and system load test.



For more information about the Hydraulic Impact Hammer and Powerpack, or to discuss your project requirements, contact the team at CESCO Equipment. Our specialists can assist with equipment selection, technical support, and tailored solutions for piling, foundation, and heavy construction applications.