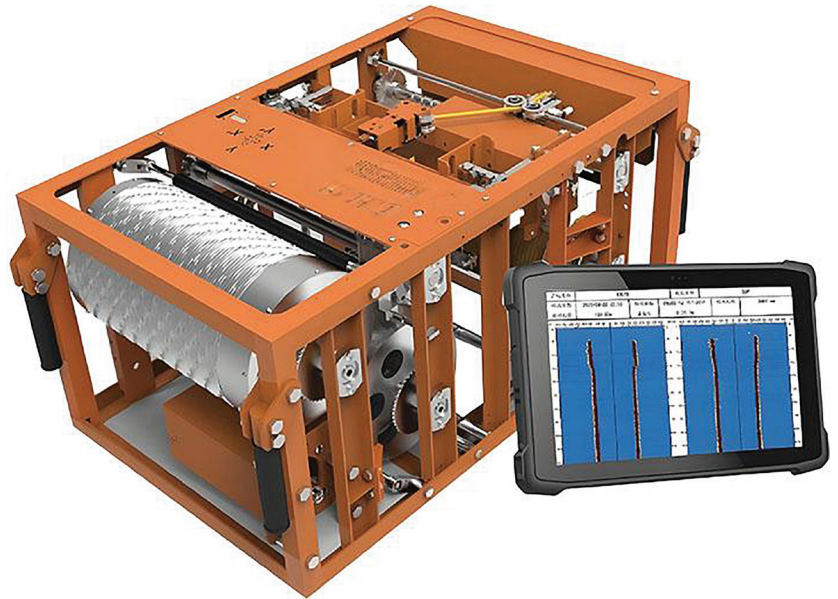


The Ultrasonic Caliper Log is a high-precision inspection system designed for borehole, pile, and diaphragm wall testing in deep foundation projects. Using advanced ultrasonic and 3D imaging technology, it provides accurate cavity and groove profiling, helping identify defects, verify structural integrity, and improve quality control. Suitable for rail, highway, port, subway, bridge, and high-rise construction projects, the system delivers reliable performance across a wide range of site conditions with intelligent automated operation, real-time data display, and wireless data transmission capabilities.

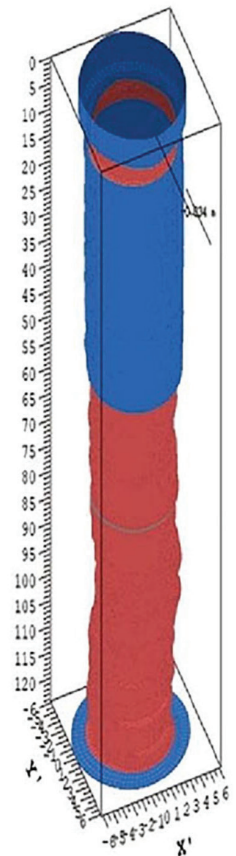


FEATURES

3D Imaging	Advanced C-LEAF 3D borehole imaging technology
Wide Detection Range	Detects apertures from 300mm to 11000mm
Intelligent Operation	Automatic probe lifting/lowering with real-time display
Signal Stability	Anti-electromagnetic interference signal processing
Power Supply	Built-in lithium battery and 220V AC support
Wireless Connectivity	Optional WiFi data upload with GPS positioning
Compact Design	Portable winch system fits in a standard vehicle
Self-Calibration	Automatic calibration based on aperture or groove width
High Adaptability	Suitable for mud density up to 1.4g/cm ³
Real-Time Reporting	Displays and prints waveform and hole diagrams

SPECIFICATIONS

Model Number	GS-83
Master Control Form	Touch terminal, 4-core processor, 8GB RAM
Display Mode	12.1" highlight display
Operation Mode	Touch screen
Operating System	Linux system
Scanning Speed	≥20 cycles/second
Band Width	1–500K
Acoustic Accuracy	≤0.5%
Measurement Accuracy (Horizontal Accuracy)	±0.2% FS
Measuring Range	300–11000mm (aperture)
Ultrasonic Frequency	83kHz
Transmitting Voltage	1000V
Sounding Depth	100/150m (customisable)
Depth Resolution	≤5mm, depth error ≤0.1%
Sound Velocity Calibration	Yes
Recording Mode	Colour/black & white images, data files
Output Mode	Printer (assorting)
Data Export	USB or wireless upload
Sediment Thickness Detection	Supported (optional special probe)
Operating Temperature	-20°C to +80°C
Power Supply Mode	220V AC / lithium battery
Probe Size	104mm × 104mm × 300mm
Probe Mass	14kg
Mud Weight	≤1.4g/cm ³
Lifting Speed	Adjustable from 0–20m/min
Emergency Lift	Yes
Stop Function	Hole bottom and hole mouth induction stop
Hole Bottom & Orifice Start Slowly	Yes
Probe Bearing Mode	Pressure sensor asynchronous adjustable double wire load, independent cable assistance
Probe Holder	Drawer lock tray
Dimensions of Winch Lifting Device	800mm × 500mm × 390mm
Winch Lifting Device Weight	65kg
Three-Dimensional Imaging	Yes



For more information about the Caliper Logging Test (Ultrasonic) or to discuss your foundation testing requirements, contact the team at CESCO Equipment. Our specialists can assist with product selection, technical advice, and tailored solutions for piling and deep foundation applications.